

For relays of series: **C, D**
 Terminal type: **SOLDER**
 Mounting: **PCB**

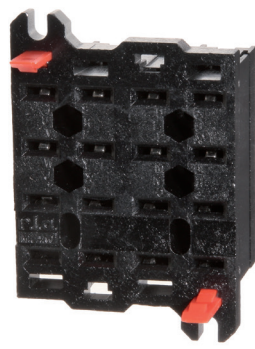
PRCC081
 PRCD161

OVERVIEW

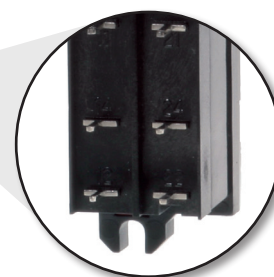
- PCB-mount
- Panel mounting
- Sturdy construction
- No internal soldering
- No maintenance
- Snap-in relay
- Provision for fitment of keying pins



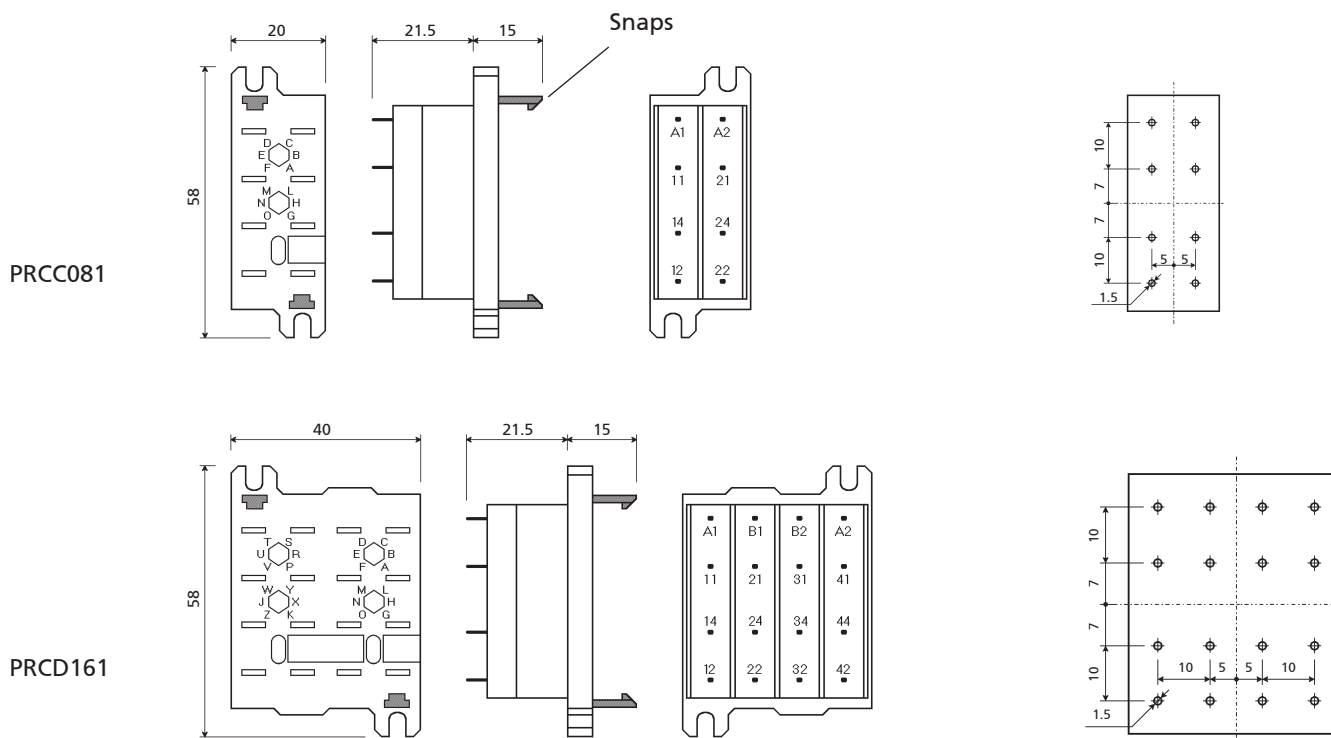
PRCC081



PRCD161



Detail of connections



Specifications

Weight: 20 / 36 g
Operating temperature: -25°C...+55°C
Storage temperature: -40°C...+70°C
Dielectric strength: 2.5kV 50Hz 1min

Type and size of terminals: solder, \varnothing 1.5mm
Fire resistance: EN60695-2-1, UL94 - V0
Standards: EN60255, EN 61810